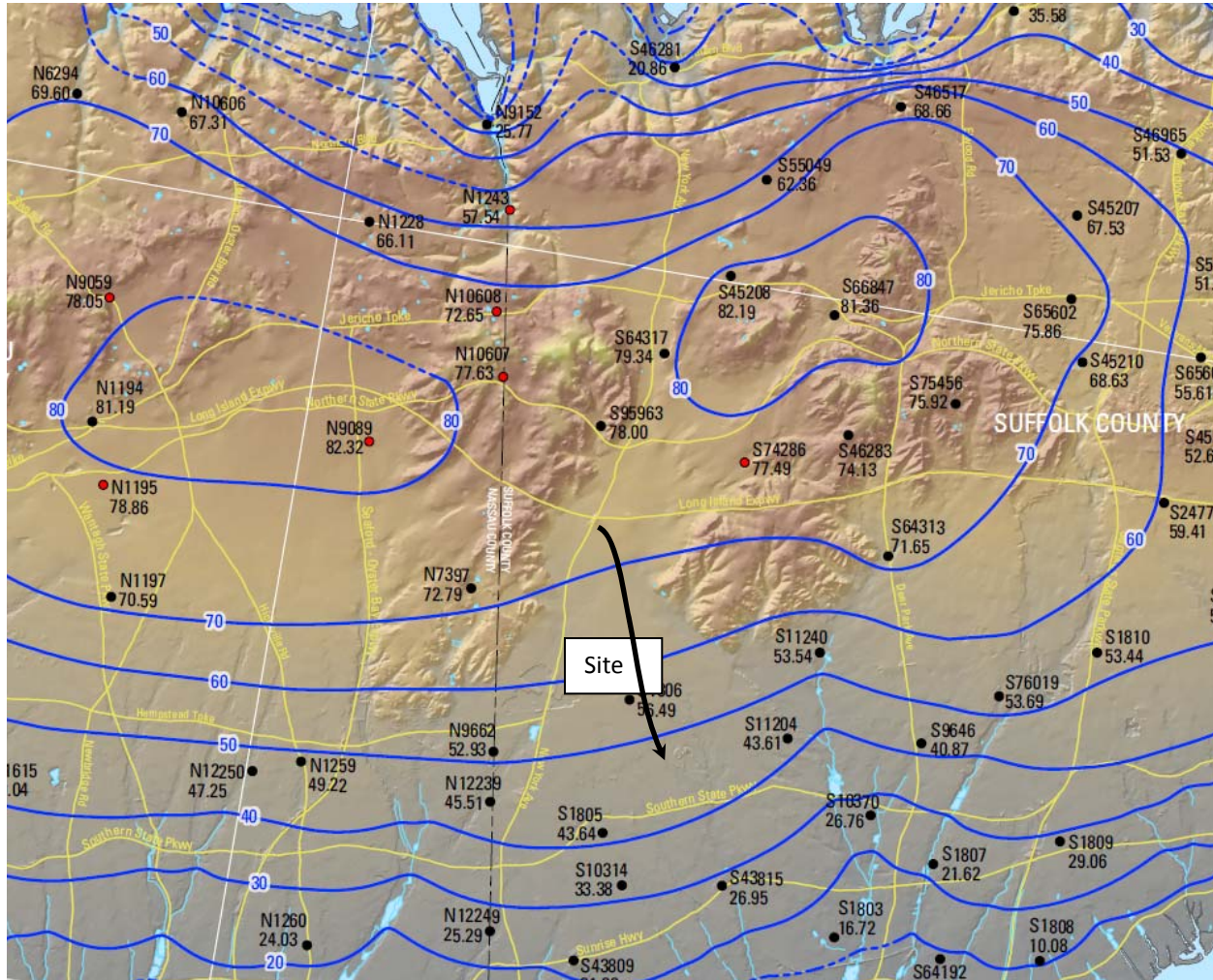


Figure 2-2. Regional groundwater elevation contours from the USGS Scientific Investigations Map 3066 report “Water-Table and Potentiometric-Surface Altitudes in the Upper Glacial, Magothy, and Lloyd Aquifers beneath Long Island, New York, March-April 2006, by Jack Monti, Jr., and Ronald Busciolano.



The arrow depicts the regional groundwater flow direction in the Upper Glacial Aquifer in the vicinity of the site. According to this map groundwater flows slightly to the southeast.